

Solar mounting solutions

system components



REMOR Solar is the largest manufacturer of solar mounting systems in Poland.

We offer a wide range of mounting solutions for all types of solar projects.

Our in-house production, quality control and continuous product development guarantees excellence of our entire product range.

Thanks to our optimized and cost-effective solutions, in a very short time we have become a recognized European supplier of solar mounting products.

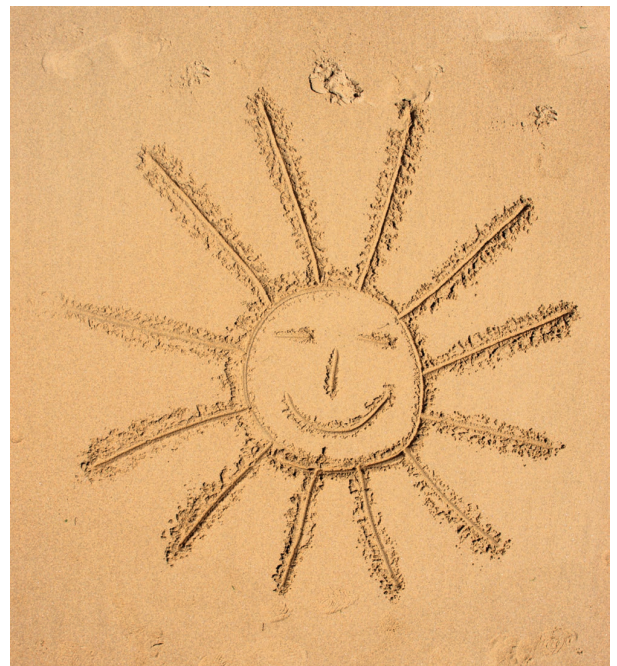
Today we deliver quality mounting solutions for our customer

throughout the entire Europe, supplying mountings to over 200 MW of PV projects per year.

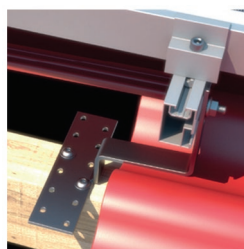
Our innovative approach, craftsmanship and wide range of products, guarantees an optimal solution just for your project, including: sloped roof, flat roof, ground mounted systems, carports, as well as custom made solutions.

We treat every order with individual and personal attention, exploring and implementing the most effective solution for your project.

The Future of Energy is Here.



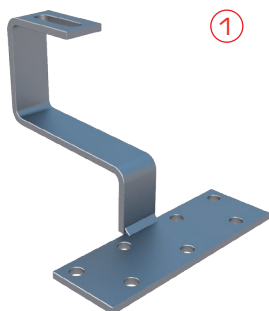
Roof Hooks	4
Mounting Rails	11
Rails Connectors	13
Clamps and Brackets	14
Screws and Nuts	16
Flat Roofs Components	19



high quality stainless steel and aluminum

for all roofs types

wood screws and hexageon nuts
must be ordered separately



①

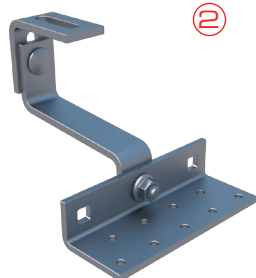
Roof Hook Standard I

- ceramic tile, concrete

Art. 007 Roof Hook Standard I

Plate	Bar	Hole	Long Hole	Material
150x50x5 (mm)	30x5 (mm)	Ø9 (mm) x 7 M8	11x30 (mm) M10	A2 1.4301 shot blasting

Notifications:



②

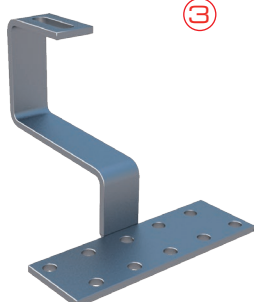
Pantile Roof Hook Adjustable Vario I

- pantile roof

Art. 011 Pantile Roof Hook Adjustable Vario I

Plate	Bars	Hole	Long Hole	Material
140x56x35x5 (mm) 80x5 (mm)	30x5 (mm) 30x6 (mm)	Ø9 (mm) x 9 M8	11x34 (mm) M10	A2 1.4301 stainless steel

Notifications: included screws M10 A2



③

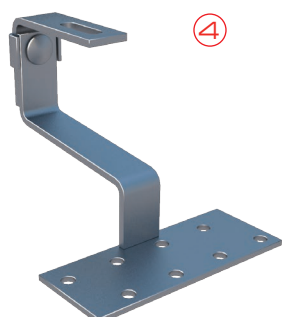
Roof Hook Standard II

- pantile roof

Art. 025 Roof Hook Standard II

Plate	Bar	Hole	Long Hole	Material
150x50x5 (mm)	30x5 (mm)	Ø9 (mm) x 10 M8	11x29 (mm) M10	A2 1.4301 stainless steel

Notifications:



④

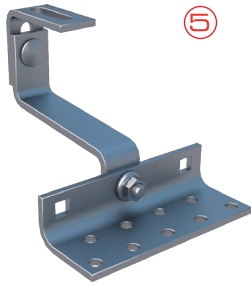
Pantile Roof Hook Adjustable Vario II

- pantile roof

Art. 027 Pantile Roof Hook Adjustable Vario II

Plate	Bar	Hole	Long Hole	Material
150x50x5 (mm)	30x5 (mm)	Ø9 (mm) x 8	11x37 (mm) M10	A2 1.4301 shot blasting, stainless steel

Notifications: included screws M10 A2



⑤

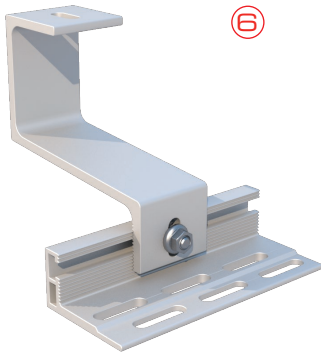
Roof Hook Adjustable ECO

- pantile roof

Art. 026 Roof Hook Adjustable ECO

Plate	Bars	Hole	Long Hole	Material
140x56x35x5 (mm) 80x5 (mm)	30x5 (mm) 30x6 (mm)	Ø9 (mm) x 9 M8	11x34 (mm) M10	A2 1.4301 stainless steel

Notifications: included screws M10 A2



⑥

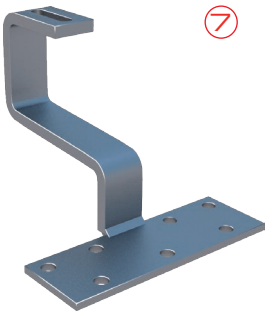
Roof Hook Adjustable

- pantile roof

Art. 0148 Roof Hook Adjustable

Plate	Bar	Long Hole	Material
150x65x5 (mm)	50x5 (mm)	9x15 (mm) x 6 M8	AL 6060T6

Notifications:



⑦

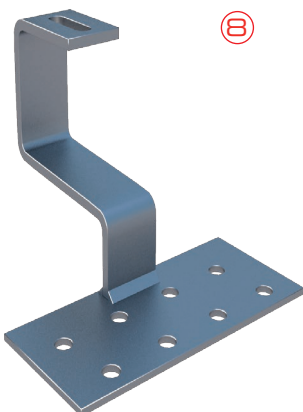
Pantile Roof Hook Heavy with thicker bar

- pantile roof

Art. 031 Pantile Roof Hook Heavy with thicker bar

Plate	Bar	Hole	Long Hole	Material
150x50x5 (mm)	30x8 (mm)	Ø9 (mm) x 7	9x39 (mm)	A2 1.4301 shot blasting

Notifications:



⑧

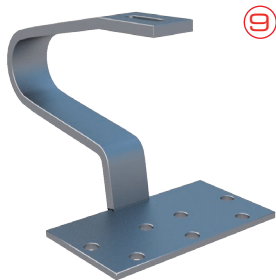
Pantile Roof Hook Mega Heavy II

- pantile roof

Art. 006 Pantile Roof Hook Mega Heavy II

Plate	Bar	Hole	Long Hole	Material
180x80x5 (mm)	40x6 (mm)	Ø11 (mm) x 8	11x30 (mm)	A2 1.4301 shot blasting, stainless steel

Notifications:



9

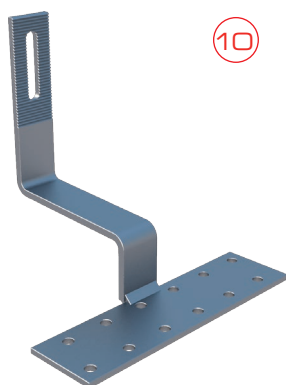
Pantile Roof Hook Mega Heavy II

- pantile roof

Art. 082 Pantile Roof Hook Mega Heavy II

Plate	Bar	Hole	Long Hole	Material
150x80x5 (mm)	35x6 (mm)	Ø10,5 (mm) x 7 M10	11x30 (mm) M10	A2 1.4301 shot blasting, stainless steel

Notifications:



10

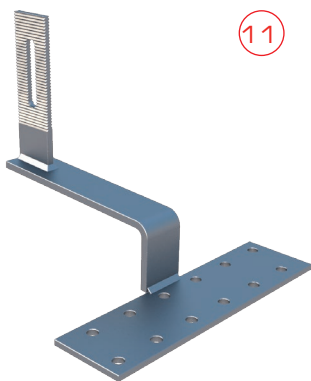
Pantile Roof Hook Standard with serration

- crooked area of roof

Art. 093 Pantile Roof Hook Standard with serration

Plate	Bar	Hole	Long Hole	Material
180x50x4 (mm)	30x5 (mm)	Ø7 (mm) x 12 M6	9x47 (mm) M8	A2 1.4301 shot blasting, stainless steel

Notifications:



11

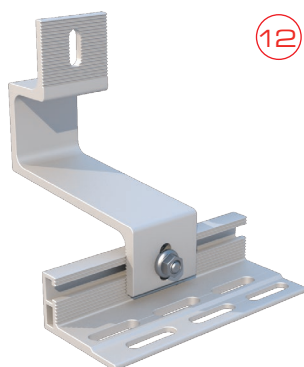
Pantile Roof Hook Vertical with serration

- pantile roof

Art. 0114 Pantile Roof Hook Vertical with serration

Plate	Bar	Hole	Long Hole	Material
180x50x4 (mm)	30x5 (mm)	Ø7 (mm) x 12 M6	9x37,5 (mm) M8	A2 1.4301 shot blasting, stainless steel

Notifications:



12

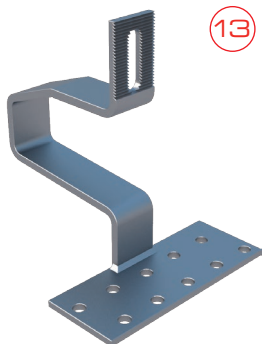
Roof Hook Adjustable with serration

- pantile roof

Art. 0149 Roof Hook Adjustable with serration

Plate	Bar	Long Hole	Material
150x65x5 (mm)	50x5 (mm)	9x15 (mm) x 6 M8	AL 6060T6

Notifications:



13

Pantile Roof Hook Mega Heavy II with serration

- pantile roof

Art. 0115 Pantile Roof Hook Heavy II with serration

Plate	Bar	Hole	Long Hole	Material
150x60x5 (mm)	35x6 (mm)	Ø9 (mm) x 10 M8	11x37,5 (mm) M10	A2 1.4301 shot blasting, stainless steel

Notifications:



14

Pantile Roof Hook Adjustable with serration

- pantile roof

Art. 0101 Pantile Rook Hook Adjustable with serration

Plate	Bar	Hole	Long Hole	Square Hole	Material
140x56x35x5 (mm)	30x5 (mm)	Ø9 (mm) x 9 M8	11x30 (mm) M10	11 (mm) x 2	A2 1.4301 shot blasting

Notifications: included screws M10 A2.



15

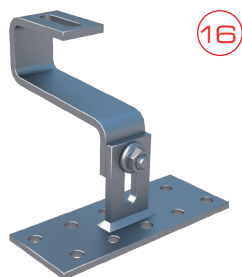
Vertical Roof Hook

- pantile roof

Art. 056 Vertical Roof Hook

Plate	Bar	Hole	Long Hole	Material
180x80x4 (mm)	40x6 (mm)	Ø11 (mm) x 8 M10	11x39 (mm) M10	A2 1.4301 shot blasting

Notifications:



16

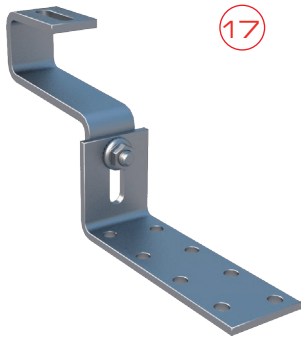
Roof Hook Monk I

- monk tile

Art. 088 Roof Hook Monk I

Plate	Bar	Hole	Long Hole	Material
150x60x5 (mm)	35x6 (mm)	Ø9 (mm) x 10 M8	11x39 (mm) M10	A2 1.4301 shot blasting

Notifications: included screws M10 A2



17

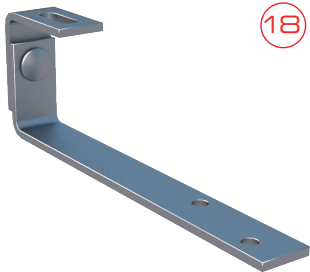
Roof Hook Monk II

- monk tile

Art. 089 Roof Hook Monk II

Plate	Bar	Hole	Long Hole	Material
150x50x5 (mm)	35x6 (mm)	Ø9 (mm) x 8 M8	11x39 (mm) M10	A2 1.4301 shot blasting

Notifications: included screws M10 A2



18

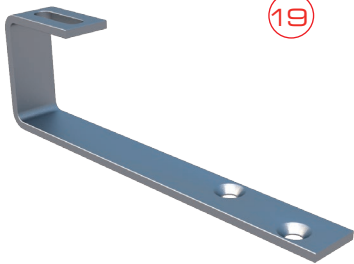
Slate Tile Roof Hook Adjustable

- slate tile

Art. 013 Slate Tile Roof Hook Adjustable

Plate	Length	Hole	Long Hole	Material
30x5 (mm)	235 (mm)	Ø9 (mm) x 2 M8	11x29 (mm) M10	A2 1.4301 stainless steel

Notifications:



19

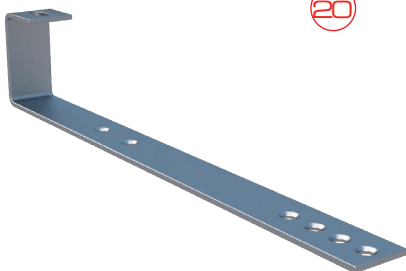
Slate Tile Roof Hook

- slate tile

Art. 015 Slate Tile Roof Hook

Plate	Length	Hole	Long Hole	Material
30x5 (mm)	235 (mm)	Ø9 (mm) x 2 M8	11x29 (mm) M10	A2 1.4301 stainless steel

Notifications:



20

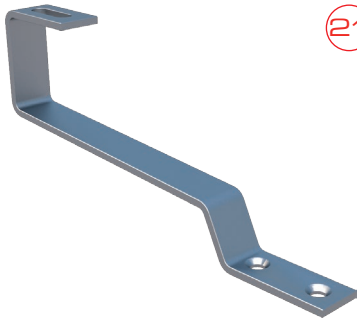
Slate Tile Long Roof Hook

- slate tile

Art. 016 Roof Hook Monk I

Plate	Length	Hole	Long Hole	Material
40x4 (mm)	406 (mm)	Ø9 (mm) x 6 M8	11x11 (mm) M10	A2 1.4301 shot blasting

Notifications:



21

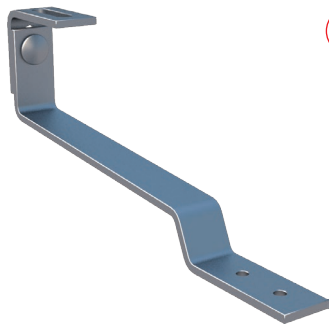
Plain Tile Roof Hook Adjustable

- plain tile

Art. 0118 Plain Tile Rook Hook Adjustable

Plate	Length	Hole	Long Hole	Material
30x5 (mm)	285 (mm)	Ø9 (mm) x 2 M8	11x29 (mm) M10	A2 1.4301 stainless steel

Notifications:



22

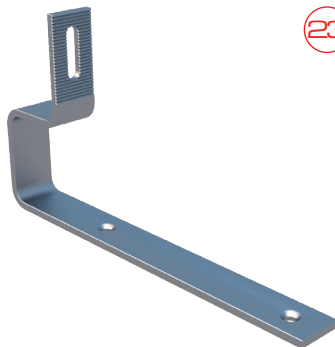
Plain Tile Roof Hook

- plain tile

Art. 0119 Plain Tile Rook Hook

Plate	Length	Hole	Long Hole	Material
30x5 (mm)	285 (mm)	Ø9 (mm) x 2 M8	11x29 (mm) M10	A2 1.4301 stainless steel

Notifications: included Bolt and Nut DIN A2



23

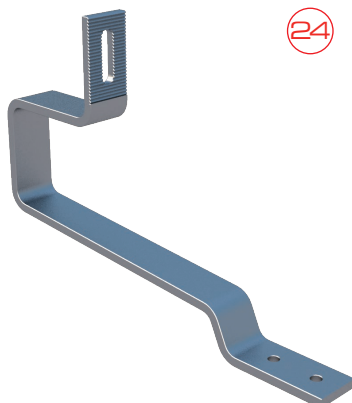
Slate Tile Roof Hook Adjustable

- slate tile

Art. 0142 Plain Tile Rook Hook Adjustable

Plate	Length	Hole	Long Hole	Material
30x5 (mm)	250 (mm)	Ø9 (mm) x 2 M8	9x24 (mm) M8	A2 1.4301 stainless steel

Notifications:



24

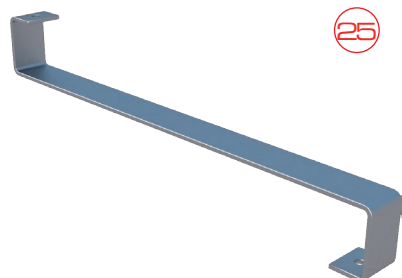
Plain Tile Roof Hook with serration

- plain tile

Art. 0143 Plain Tile Roof Hook with serration

Plate	Length	Hole	Long Hole	Material
30x5 (mm)	265 (mm)	Ø9 (mm) x 2 M8	9x24 (mm) M8	A2 1.4301 stainless steel

Notifications:



25

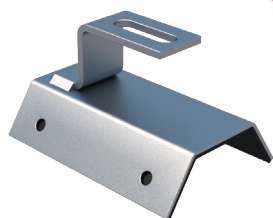
Roof Hook - Solar thermal collector

- solar thermal collector

Art. 0105 Roof Hook - Solar thermal collector

Measurements	Length	Hole	Material
40x4 (mm)	470 (mm)	Ø9 (mm) x 2 M8	A2 1.4301 shot blasting

Notifications:



26

Trapezoidal Roof Hook I

- trapezoidal roof

Art. 019 Trapezoidal Roof Hook I

Length	Bar	Hole	Long Hole	Material
120 (mm)	30x4 (mm)	Ø7 (mm) x 5 M6	11x30 (mm) M10	A2 1.4301 stainless steel

Notifications: included Rubber EPDM



27

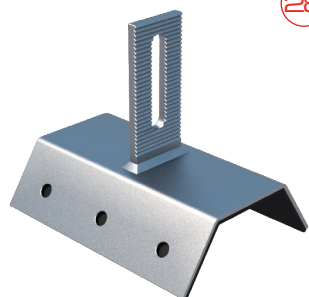
Trapezoidal Roof Hook II

- trapezoidal roof

Art. 040 Trapezoidal Roof Hook II

Length	Bar	Hole	Long Hole	Material
120 (mm)	30x5 (mm)	Ø7 (mm) x 4 M6	11x9 (mm) x 2 M10	A2 1.4301 shot blasting, stainless steel

Notifications: included rubber EPDM



28

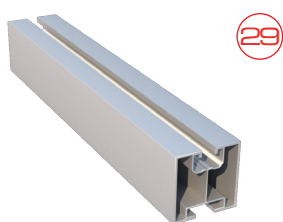
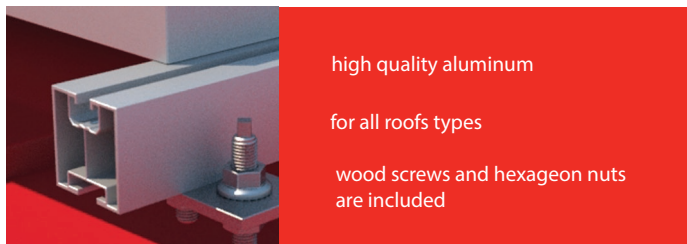
Trapezoidal Roof Hook with serration

- trapezoidal roof

Art. 060 Trapezoidal Roof Hook with serration

Length	Bar	Hole	Long Hole	Material
120 (mm)	70x30x4 (mm)	Ø7 (mm) x 5 M6	11x30 (mm) M10	A2 1.4301 shot blasting

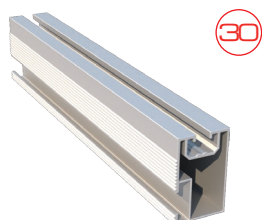
Notifications: included rubber EPDM



Mounting Rail ECO 40 type I

Art. 0111 Mounting Rail ECO 40 type I

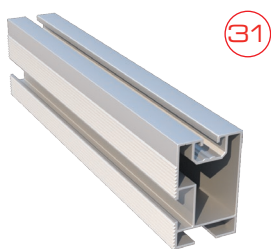
Measurements	Available lengths	Joining screws	Material
40x40(mm)	<ul style="list-style-type: none"> • 2070 (mm) • 3100 (mm) • 6200 (mm) 	Top: M8 Side: M10	AL 6060T6



Mounting Rail with serration I

Art. 0109 Mounting Rail with serration I

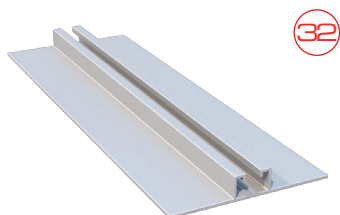
Measurements	Available lengths	Joining screws	Material
31x50 (mm)	<ul style="list-style-type: none"> • 2070 (mm) • 3100 (mm) • 6200 (mm) 	Top: M8 Side: M8/M10/M12	AL 6060T6



Mounting Rail with serration II

Art. 0110 Mounting Rail with serration II

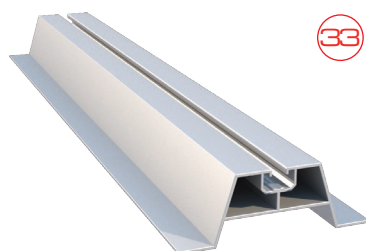
Measurements	Available length	Joining screws	Material
38x60(mm)	<ul style="list-style-type: none"> • 6200 (mm) 	Top: M8 Side: M8/M10/M12	AL 6060T6



Mounting Rail with serration III

Art. 0112 Mounting Rail with serration III

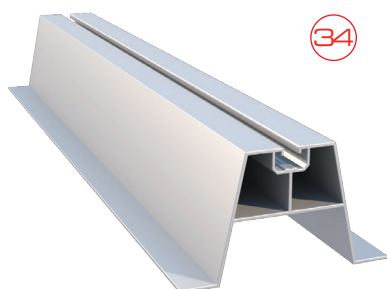
Measurements	Available lengths	High	Joining screws	Material
31x50 (mm)	<ul style="list-style-type: none"> • 2070 (mm) • 3100 (mm) • 6200 (mm) 	11 (mm)	Top: M8 Side: M8/M10/M12	AL 6060T6



Trapezoid Mounting Rail

Art. 0146 Trapezoid Mounting Rail

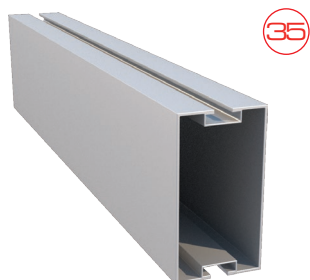
Measurements	Available lengths	Joining screws	Material
106x40 (mm)	<ul style="list-style-type: none"> • 1000 (mm) • 3000 (mm) • 6000 (mm) 	M8 (Art.080)	AL 6060T6



Mounting Rail I

Art. 0144 Mounting Rail I

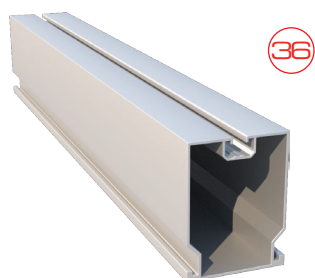
Measurements	Available lengths	Joining screws	Material
106x60x70 (mm)	<ul style="list-style-type: none"> • 2070 (mm) • 3100 (mm) • 6200 (mm) 	Top: M8/ M10 (Art.0129) Side: M8/M10 (Art.0129)	AL 6060T6



Mounting Rail I

Art. 0144 Mounting Rail I

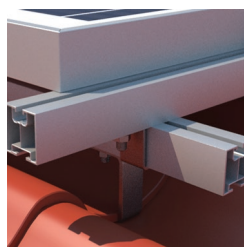
Measurements	Available lengths	Joining screws	Material
111x60x1,8 (mm)	<ul style="list-style-type: none"> • 2070 (mm) • 3100 (mm) • 6200 (mm) 	Top: M8/ M10 (Art.0129) Side: M8/M10 (Art.0129)	AL 6060T6



Mounting Rail II

Art. 0145 Mounting Rail II

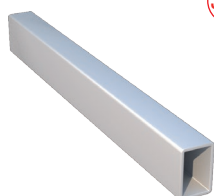
Measurements	Available lengths	Joining screws	Material
84x64x1,8 (mm)	<ul style="list-style-type: none"> • 2700 (mm) • 3100 (mm) • 6200 (mm) 	M8 (Art.080)	AL 6060T6



high quality stainless steel and aluminum

for all roofs types

wood screws and hexageon nuts
are included

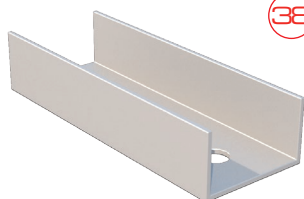


37

Rail connector for mounting rails Art. 0110, Art. 0109

Art. 0123 Rail connector for mounting rail Art. 0110, Art. 0109

Measurements	Use	To join	Material
30x25x2x300 (mm) 30x15x2x300 (mm)	Mounting two rails	screw Art. 0128 x 2	AL 6060T6

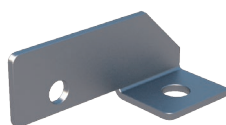


38

Rail connector for mounting rails Art. 0111, Art. 062

Art. 058 Rail connector for mounting rail Art. 0111, Art. 062

Measurements	Use	To join	Material
120x40x25 (mm)	Mounting two rails	screw Art. 0131 M10x25 x 2 nuts Art. 0134	AL 6060T6



39

Cross rail connector I

Art. 0124 Cross rail connector I

Measurements	Use	To join	Material
74x28 (mm)	Cross Mounting two rails (art. 0109/art. 0110)	screw Art. 0129 M8x25 x 2 nuts M8 Art. 0134	A2 1.4301 stainless steel

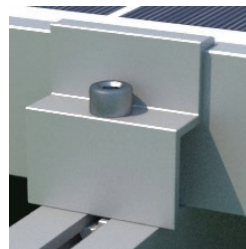


40

Cross rail connector II

Art. 042 Cross rail connector II

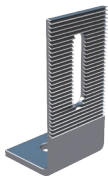
Measurements	Use	To join	Material
25x19x30x39 (mm)	Cross Mounting two rails (art. 0111)	screw Art. 0129 M8x25 x 2 nuts M8 Art. 0134	A2 1.4301 stainless steel



high quality stainless steel and aluminum

for all roofs types

wood screws and hexagon nuts are included



41

Bracket

Art. 0122 Bracket

Measurements	Hole	Long Hole	Use	Material
	M10	M8	Art. 0121	A2 1.4301 stainless steel



42

Mounting plate

Art. 045 Mounting plate

Available Measurements	Hole	Long Hole	Use	Material
<ul style="list-style-type: none"> 80x40x5 (mm) 110x40x5 (mm) 	M10	M8	Art. 0121	A2 1.4301 stainless steel

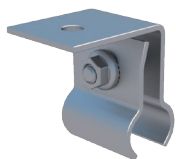


43

Seam Roof Clamp

Art. 120 Seam Roof Clamp

Measurements	Hole	Long Hole	Use	Material
100x40x40x4 (mm)	∅9 (mm) x 2 M8	11 (mm) M10	Seam Roof Clamps	A2 1.4301 stainless steel

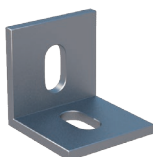


44

Kalzip Bracket

Art. 086 Kalzip Bracket

Available Measurements	Use	Material
<ul style="list-style-type: none"> M8 	Use with Hexagon socket cap screws Art. 0132 Use: for Mounting Rails Art. 0109, Art. 0110, Art. 062, Art. 0111, Art. 0112	A2 1.4301 stainless steel



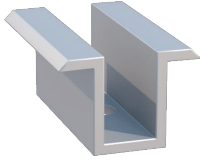
45

Mounting Bracket

Art. 047 Mounting Bracket

Measurements	Long Hole	Use	Material
40x40x4 (mm)	10 (mm) M9	Cross assembly	AL 6060T6

46



Middle clamp

Art. 073 Middle clamp

Available Measurements	Hole	Use	Material
<ul style="list-style-type: none"> 50x30x3 (mm) 70x30x3 (mm) 80x30x3 (mm) 	M 8	for mounting PV modules with frame	AL 6060T6

47

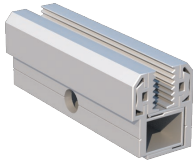


End clamp

Art. 075 End clamp

Available length	Available heights	Hole	Use	Material
<ul style="list-style-type: none"> 50 (mm) 70 (mm) 80 (mm) 	<ul style="list-style-type: none"> 35 (mm) 40 (mm) 45 (mm) 46 (mm) 48 (mm) 50 (mm) 	M 8	for mounting PV modules with frame	AL 6060T6

48

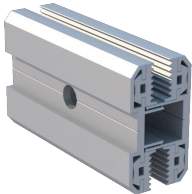


End clamp for laminates

Art. 077 End clamp for laminates

Measurements	Use	Material
80x30x25 (mm)	thin-film modules	AL 6060T612

49

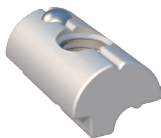


Middle clamp for laminates

Art. 076 Middle clamp for laminates

Measurements	Use	Material
80x30x25 (mm)	thin-film modules	AL 6060T6

50



T-slot nut self aligning with spring ball

Art. 080 T-slot nut self aligning with spring ball

Available Measurements	Use	Material
<ul style="list-style-type: none"> M 8 	Use with Hexagon socket cap screws Art. 0132 Use: for Mounting Rails Art. 0109, Art. 0110, Art. 062, Art. 0111, Art. 0112	A2 1.4301 stainless steel

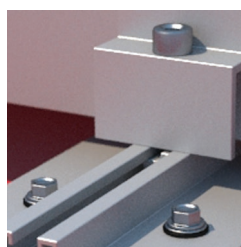
51



T-slot click

Art. 0147 T-slot click

Measurements	Use	Material
M 8	thin-film modules	AL 6060T6



high quality stainless steel

for all roofs types



52

Hanger bolt

Art. 0121 Hanger bolt

Available Measurements	Use	Material
<ul style="list-style-type: none"> M 10x200 M 10x250 M 10x300 M 12x200 M 12x250 M 12x300 	with art. 0122 or art.045 Use: metal roof / eternit roof	A2 1.4301 stainless steel



53

Hexagon head Wood screw

Art. 0125 Hexagon head Wood screw

Available Measurements	Use	Material
<ul style="list-style-type: none"> M 10x120 M 10x80 	Roof hooks	A2 1.4301 stainless steel



54

Flat head screw GHS (HBS type)

Art. 0126 Flat head screw GHS (HBS type)

Available Measurements	Use	Material
<ul style="list-style-type: none"> M 6x80 M 8x80 M 8x120 	Roof hooks	A2 1.4301 stainless steel



55

Screw TCS with serration

Art. 0127 Screw TCS with serration

Available Measurements	Use	Material
<ul style="list-style-type: none"> M 6x80 M 8x80 M 8x120 	Roof hooks	A2 1.4301 stainless steel



56

Screw with hexagon head and flange

Art. 0128 Screw with hexagon head and flange

Available Measurements	Use	Material
<ul style="list-style-type: none"> M 4, 5x16 M 4, 8x22 	Roof hooks	A2 1.4301 stainless steel steel galvanised

57



Hexagon socket cap screw with serration

Art. 0132 Hexagon socket cap screw with serration

Available Measurements	Use	Material
<ul style="list-style-type: none"> • M8x20 • M8x25 • M8x30 • M8x35 • M8x40 • M8x45 • M8x50 	with nuts ball art. 080 and clamps art. 072, art. 075	A2 1.4301 stainless steel

58



Hammerhead screw

Art. 0129 Hammerhead screw

Available Measurements	Use	Material
<ul style="list-style-type: none"> • M8x20 • M8x25 • M8x30 • M10x20 • M10x25 • M10x30 	Mounting Rail Art. 0110	A2 1.4301 stainless steel

59



Hammerhead screw 28/15 with ball

Art. 0138 Hammerhead screw with ball

Available Measurements	Use	Material
<ul style="list-style-type: none"> • M8 	with nuts Art. 0139 Mounting Rail Art. 0109, Art. 0111, Art. 0112	A2 1.4301 stainless steel

60



Hammerhead screw 41/41

Art. 0130 Hammerhead screw 41/41

Available Measurements	Use	Material
<ul style="list-style-type: none"> • M10x30 	Mounting Rail Art. 0110	A2 1.4301 stainless steel

61

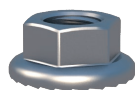


Hexagon head screw

Art. 0131 Hexagon head screw

Available Measurements	Use	Material
<ul style="list-style-type: none"> • M10x20 • M10x25 • M10x30 	Mounting Rail Art. 0110	A2 1.4301 stainless steel

62

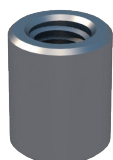


Hexagon flange nut with serration

Art. 0134 Hexagon flange nut with serration

Available Measurements	Use	Material
<ul style="list-style-type: none"> M 10 	Mounting Rail Art. 0110	A2 1.4301 stainless steel

63



Socket head nut with SW6

Art. 0139 Socket head nut with SW6

Available Measurements	Use	Material
<ul style="list-style-type: none"> M 8 M 10 	Hammerhead screws Art. 0138	A2 1.4301 stainless steel

64



Bit-Si Pin Hexagon

Art. 0136 Bit-Si Pin Hexagon

Measurements	Material
M 8	A2 1.4301 stainless steel

65



Bit-Si Pin Tx Six

Art. 0137 Bit-Si Pin Tx Six

Measurements	Material
M 8	A2 1.4301 stainless steel



high quality stainless steel, aluminum and concrete

for flat roofs

Screws and hexageon nuts are included

66



Mounting Support Angle - horizontal

Art. 098 Mounting Support Angle - horizontal

Measurements	Use	Material
Needed Solar Panel Measurements	Flat roof	AL 6060T6

67

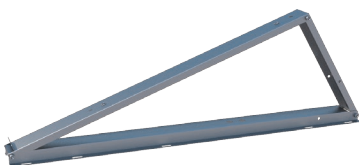


Mounting Support Angle - vertical

Art. 099 Mounting Support Angle - vertical

Measurements	Use	Material
Needed Solar Panel Measurements	Flat roof	AL 6060T6

68

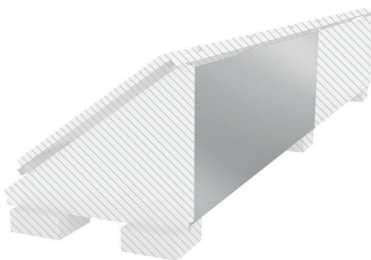


Mounting support

Art. 0150 Mounting support

Measurements	Use	Material
Needed Solar Panel Measurements	Flat roof	AL 6060T6

69

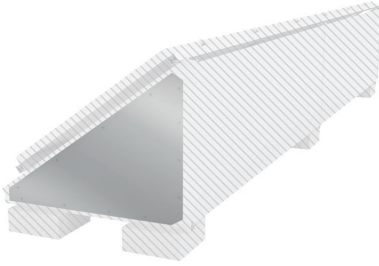


Rear cover for systems

Art. 0151 Rear cover for systems

Measurements	Use	Material
Needed Solar Panel Measurements	Flat roof	AL 6060T6

70



Side cover for systems

Art. 0152 Side cover for systems

Measurements	Use	Material
Needed Solar Panel Measurements	Flat roof	AL 6060T6

71

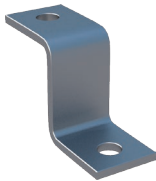


Concrete block

Art. 0153 Concrete block

Measurements	Use	Material
300x300x120 (mm)	for Ballast on roof (for art.098, art.099)	concrete

72



Anchors

Art. 0154 Anchors

Measurements	Hole	Use	Material
81x44x40x4 (mm)	M10x2	for assembly Support art.098,art.099 to concrete plate.	A2 1.4301 stainless steel

73

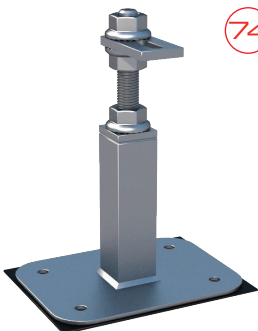


Anchors

Art. 0155 Anchors

Measurements	Use	Material
Ø 14x100 (mm)	for assembly Support in concrete	A2 1.4301 stainless steel

74



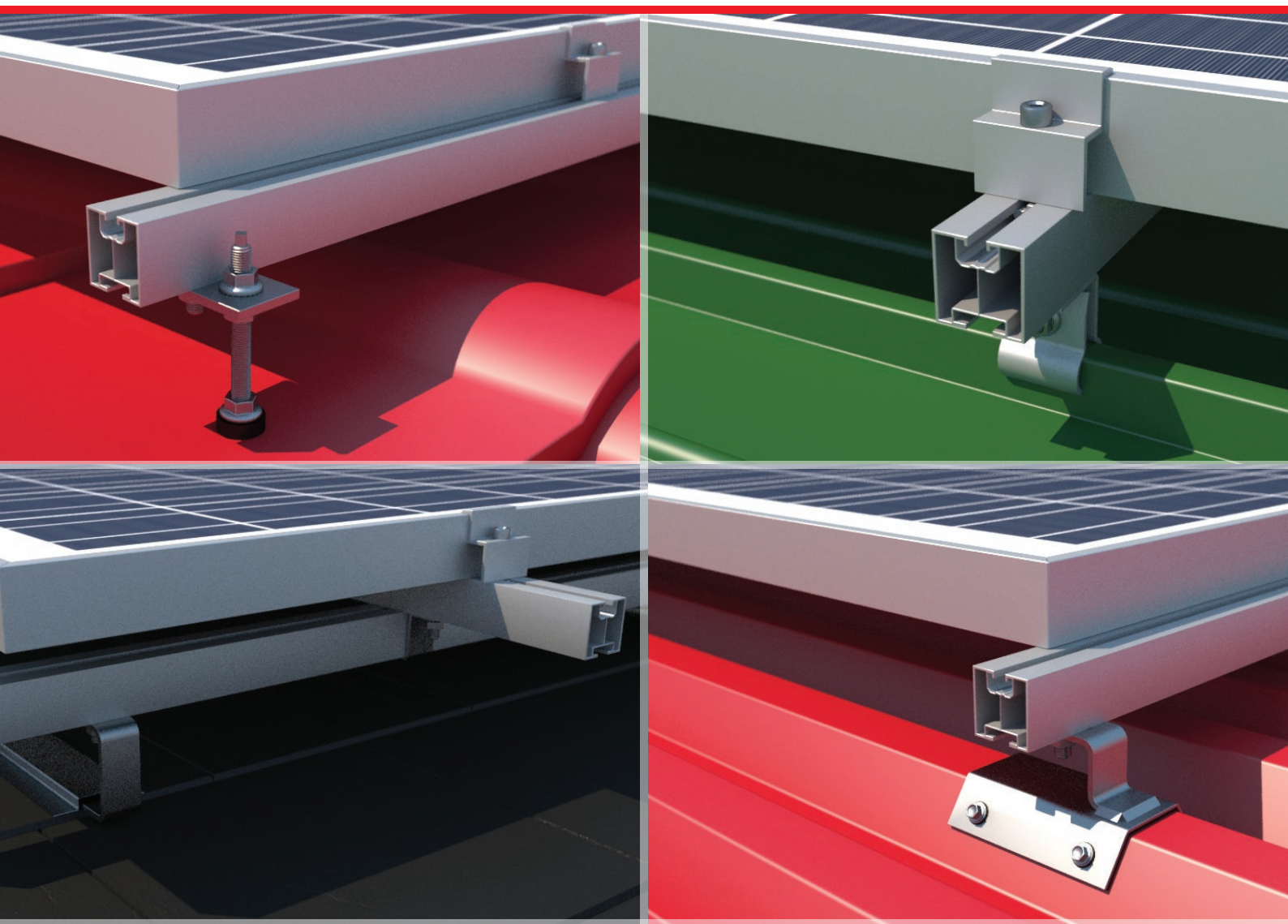
Flat Steel Stand Solution

Art. 0156 Flat Steel Stand Solution


Measurements	Hole	Use	Material
195x145x8 (mm)	M10/M12	for assembly Support in concrete	galvanised steel


The Future of Energy is Here.

Solar
Mounting
Solutions by:




Contact

 **Address:** Remor S.A., ul. Kolejowa 48
73-210 Recz, Poland

 **Phone:** +48 95 765 41 03

 **Fax:** +48 95 765 40 66

 **E-mail:** sales@remor.pl

 **Website:** www.remor.pl