

## STANDARD PACKING SOLUTION



### 1. Standard PV modules' dimensions:

type	Dimension(mm)
SR-M572***	1580*808*35
SR-M/P648***	1316*992*50
SR-M/P654***	1481*992*50
SR-M/P660***	1637*992*50
SR-M/P672***	1958*992*50

### 2. Pallets' dimensions(with packing):

type	Dimension(mm)	
	20ft FCL	40ft FCL
SR-M572***	1630*860*2160	1630*1060*960
SR-M/P648***	1365*1045*2100	1365*1080*1140
SR-M/P654***	1530*1045*2100	1530*1080*1140
SR-M/P660***	1690*1045*2210	1690*1080*1140
SR-M/P672***	2010*1045*2100	2000*1080*1140

### 3. Packing Details:

20ft FCL

Type	Pcs/pallet	Net weight (kg/pallet)	Gross weight (kg/pallet)	Pallets/container	Pcs/container
SR-M572***	48	744	833	7	336
SR-M/P648***	36	550.8	617	8	288
SR-M/P654***	36	644.4	719	7	252
SR-M/P660***	44	844.8	939	6	264
SR-M/P672***	36	835.2	935	5	180

40ft FCL

Type	Pcs/pallet	Net weight (kg/pallet)	Gross weight (kg/pallet)	Pallets/container	Pcs/container
SR-M572***	28	434	462	28	784
SR-M/P648***	20	306	338	32	640
SR-M/P654***	20	358	394	30	600
SR-M/P660***	25	480	519	28	700
SR-M/P672***	20	464	510	22	440

### 4. Bar-code:

Pallet number in a water-proof poly-bag attached on the side of the carton in order to ease stock management.

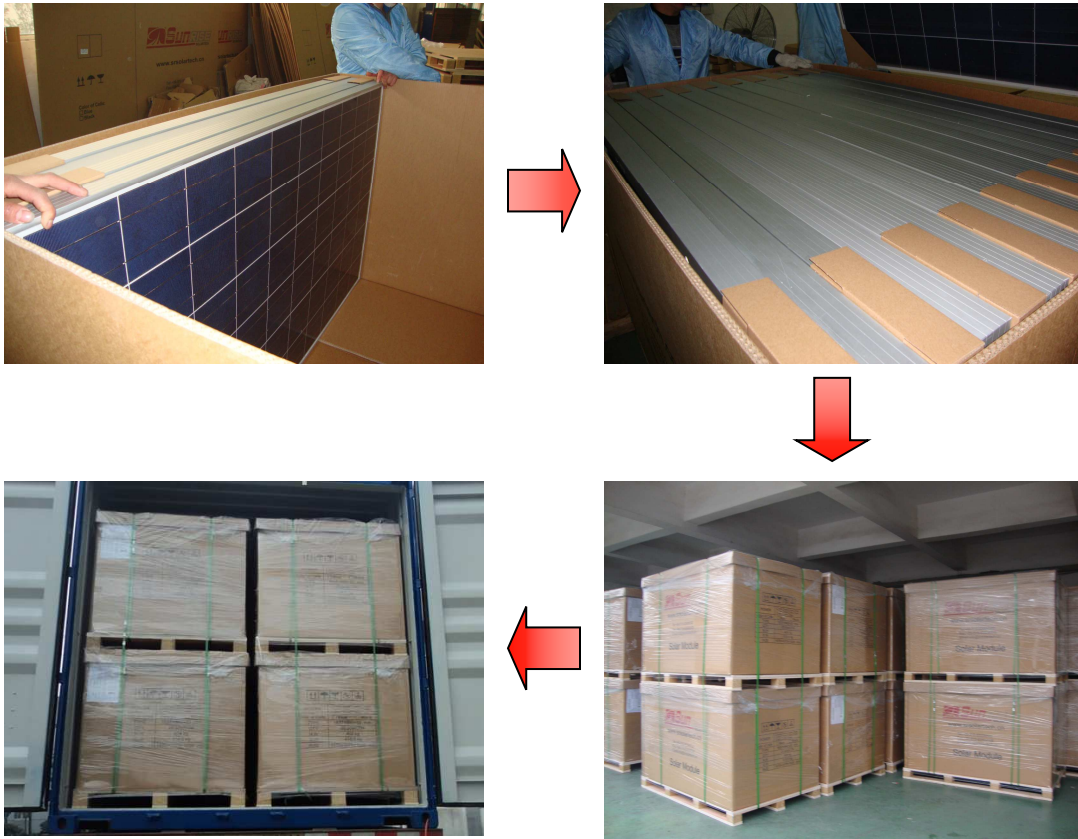


### 5. Flash reports:

Each flash report of Sunrise contains container number, cells' color (black or blue), pallet numbers, and module bar-code.

Container no: *****				BLUE/BLACK			
SUNRISE SOLARTECH Co.,Ltd							
SR-M/P***** FLASH REPORT							
NO.	SN	Voc(V)	Isc(A)	Pm(W)	Vm(V)	Im(A)	FF%

6. Sunrise packing process



**SUNRISE SOLARTECH CO., Ltd**

Add: No 65-22 Xingang Road Zhonglou Development Zone, Changzhou 213023 Jiangsu, China.

Tel: +86-519-83906502

Fax: +86-519-83906508

Website: [www.srsolartech.cn](http://www.srsolartech.cn)

Email: [info@srsolartech.cn](mailto:info@srsolartech.cn)